

2008 BOND

CONSTRUCTION PROGRESS REPORTS

November 19, 2009

ORR ELEMENTARY SCHOOL

DENSON

Roofing on the flat areas of Areas A, B and C is complete

Structural Steel detail work is nearing completion only the Gym, Area C, remains

Exterior brickwork is progressing well and windows are being installed

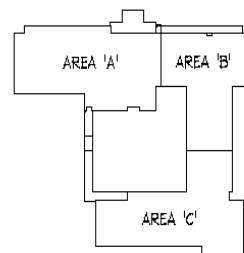
Wall cover-up inspections are complete in Areas A, B C, & D

Sheetrock work has started in Areas E & D

Storm drainage installation in Courtyard is started.

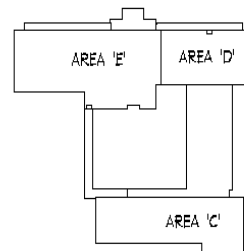
The next month's progress will be the completion of steel erection and roof deck. Dry-in of Areas A, B, E and D. Starting on finishes in Area E & D. Installation of Standing Seam Metal Roof.

A. W. ORR



FIRST FLOOR

NORTH KEY PLAN



SECOND FLOOR

NORTH KEY PLAN

2008 BOND

CONSTRUCTION PROGRESS REPORTS

November 19, 2009

CLARKSTON ELEMENTARY SCHOOL

RPR

Standing Seam Metal Roof is complete at Areas B & D

Masonry work is continuing in all areas and windows are being installed

Painting and Ceramic Tile work at 1st & 2nd floor of Areas A & C is underway

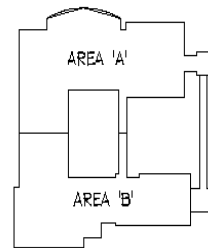
Toilet Partitions and Ceiling Grid is being installed


Permanent Electric Power is installed and Light Fixtures are being installed.

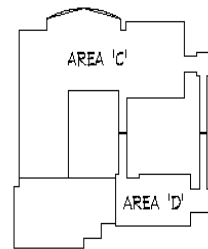
Installation of Kitchen Equipment is started

Progress for the next month will be the continuation of interior finishes in all Areas. Completion of exterior brickwork . Start final site work in Phase 1

CLARKSTON



 NORTH KEY PLAN



 NORTH SECOND FLOOR KEY PLAN

2008 BOND

CONSTRUCTION PROGRESS REPORTS

November 19, 2009

WOODS ELEMENTARY SCHOOL

DENSON

Structural steel erection is nearing completion with only detail work remaining at the south end of Area E

Wall cover-up inspections have been done in Areas A, B, D, E and the single story classrooms in Area C.

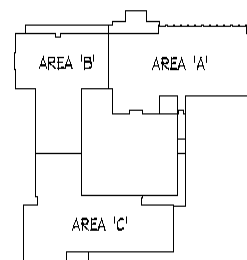
Roofing has been installed on the flat areas of D, E & C.

Exterior Brickwork is progressing and windows are being installed

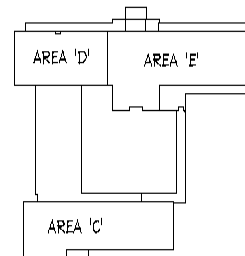
Sheetrock work has started at the single story classroom area and in Area D

The next month's progress will be the completion of steel erection, installation of standing seam metal roof. Continuation of sheetrock work in all areas and the start of installation of finishes

ANDY WOODS



▲ NORTH
FIRST FLOOR
KEY PLAN



▲ NORTH
SECOND FLOOR
KEY PLAN

2008 BOND

CONSTRUCTION PROGRESS REPORTS

November 19, 2009

JONES/BOSHEARS SCHOOL

DENSON

Steel erection is complete on all buildings and all roof decking is installed.

Installation of drywall is almost complete in Areas E & F

Brick work is complete on Areas E & F and windows are installed

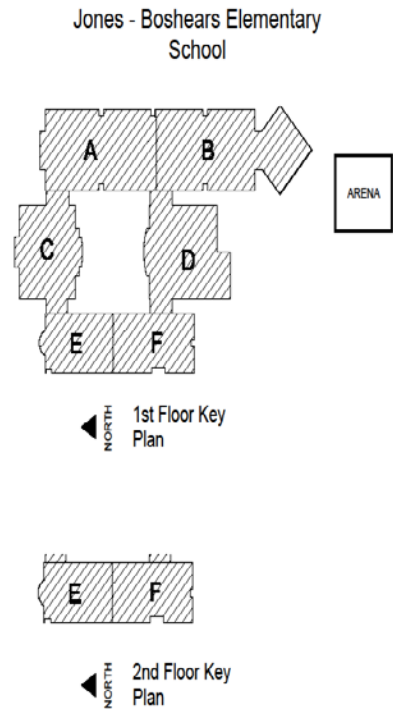
Brickwork is underway at Area C and D

Interior finishes are starting in Areas E & F

Roofing is being installed on flat roof of Areas A and B

Sheetrock work has started in Area C.

The next month's progress will be framing for sheetrock in Areas A & B. Continuation of finishes in Areas E & F. Sheetrock installation in Area C. Completion of Concrete drives and parking areas. Site retaining walls are underway.



2008 BOND

CONSTRUCTION PROGRESS REPORTS

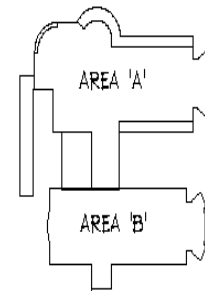
November 19, 2009

GRIFFIN ELEMENTARY

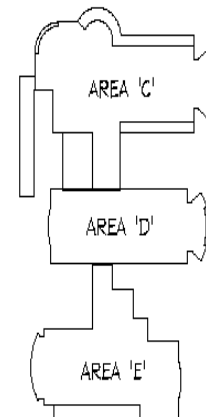
DENSON

Mass excavation is underway. Areas A & B are at subgrade and installation of select fill is started.

The next months work will be focused on mass excavation and fill, site utilities and the start of concrete foundation work in Area A and B.



LOWER FLOOR



UPPER FLOOR

